

Thomas Street Playspace - Page 2



1. New entry portal with external gathering space, seating and evocative (but easy to operate gate) and welcoming art installation



2. Timber post, rail and mesh fence with salvaged turrets (2a.) at regular intervals along boundary, and low native planting and climbers



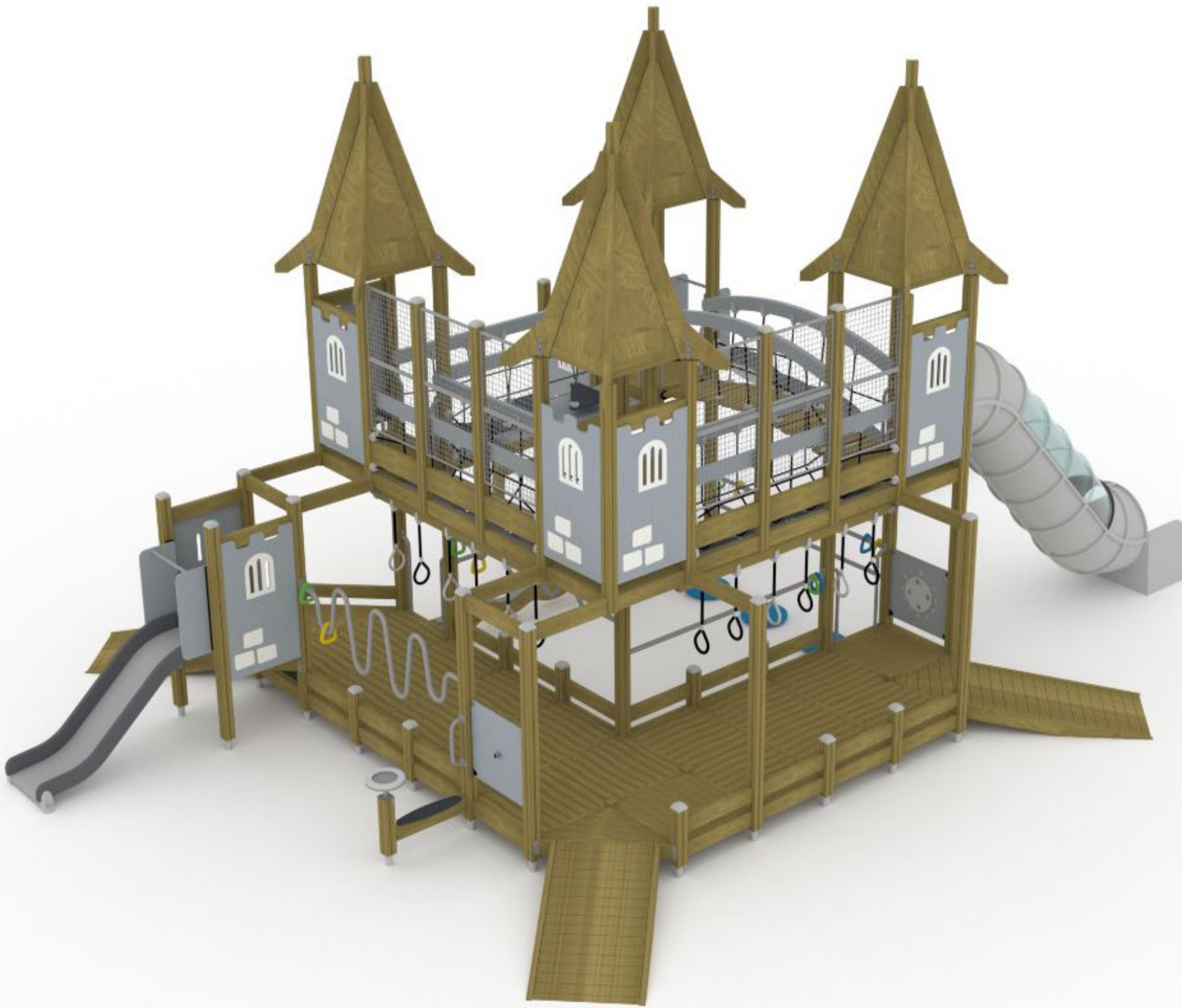
5. Shelters with slab and accessible picnic table (5a)



10. Large accessible carousel with wetpour rubber surrounds



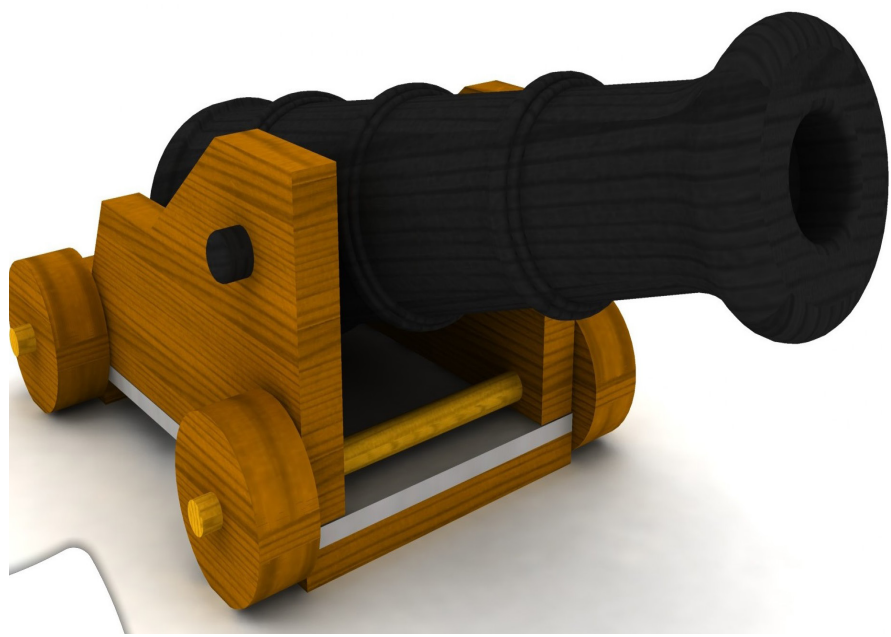
7. Cowch and assorted tomatoes and crops for imagination play and sitting on artificial turf



8. Hampton Castle with opportunities to climb, clamber, multiple slides, upper body rings and hidey places connected by a range of accessible ramps with formal stair entry to upper level



9. Discovery, communication and dexterity elements in central square



11. Extra wide slide on rubber mound with tessellated clambering (11a.) and 1:20 1.6m link path creating elevated observation area ... with cannons (11b.) for easy defence, lol, smiley face emoji!!!!



12. Extra-large shelter with accessible picnic tables



13. Random rock clusters for informal sitting and contemplation



15. Shiny distorting mirror in timber frame



14. Minstrel zone with stone sitting wall, crazy pave surfacing with instruments including contra base, chimes, drums and pagoda bells and dance steps (14a.) and sound pads (14b.) in paving

ric mcconaghy pty ltd	Project: Thomas Street Hampton	
	Client: Bayside City Council	
	Title: thomas-street-v4-0719.pdf	
	Version: 4	
	Date: July 2019	
	Drawn: Ric McConaghy	
	Status: Four Concept	
Scale: 1:100 @ A0		