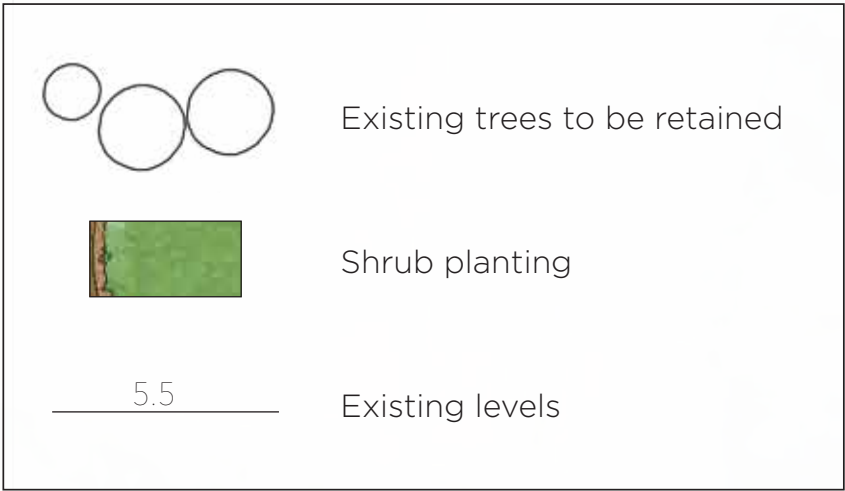




- ### Legend
- 1 Existing Bayside bench seat to be retained.
  - 2 New Play Matta base to timber swing set re-stained black with brightly painted stripes on the uprights.
  - 3 Existing fence to be removed.
  - 4 Proposed timber edging.
  - 5 Renovate existing equipment as required.
  - 6 Re-painted toddler seat.
  - 7 The entire light-pole and shield gets repainted.
  - 8 Semi-mature hedge planting.
  - 9 Renovate existing shade structure and picnic set, all timber gets re-stained black.
  - 10 Relocated bin.
  - 11 Top up play bark mulch as required.
  - 12 Existing path to be retained.
  - 13 Proposed 1.5m width stabilised granite path.
  - 14 Min. 400mm depth play bark mulch.
  - 15 Dia. 500mm log stump seats.
  - 16 5.3m Playground Centre 'Hourglass' climber.
  - 17 Relocated bench seat.
  - 18 Random planting of hardy native grassed spring / autumn with protection.
  - 19 Brightly coloured poles and log steppers.
  - 20 Bespoke log Scramble with brightly coloured pole tops.
  - 21 Semi-circle of seating rocks.
  - 22 New mulch cover, no fall zone required .



Plan





19



20



4



15



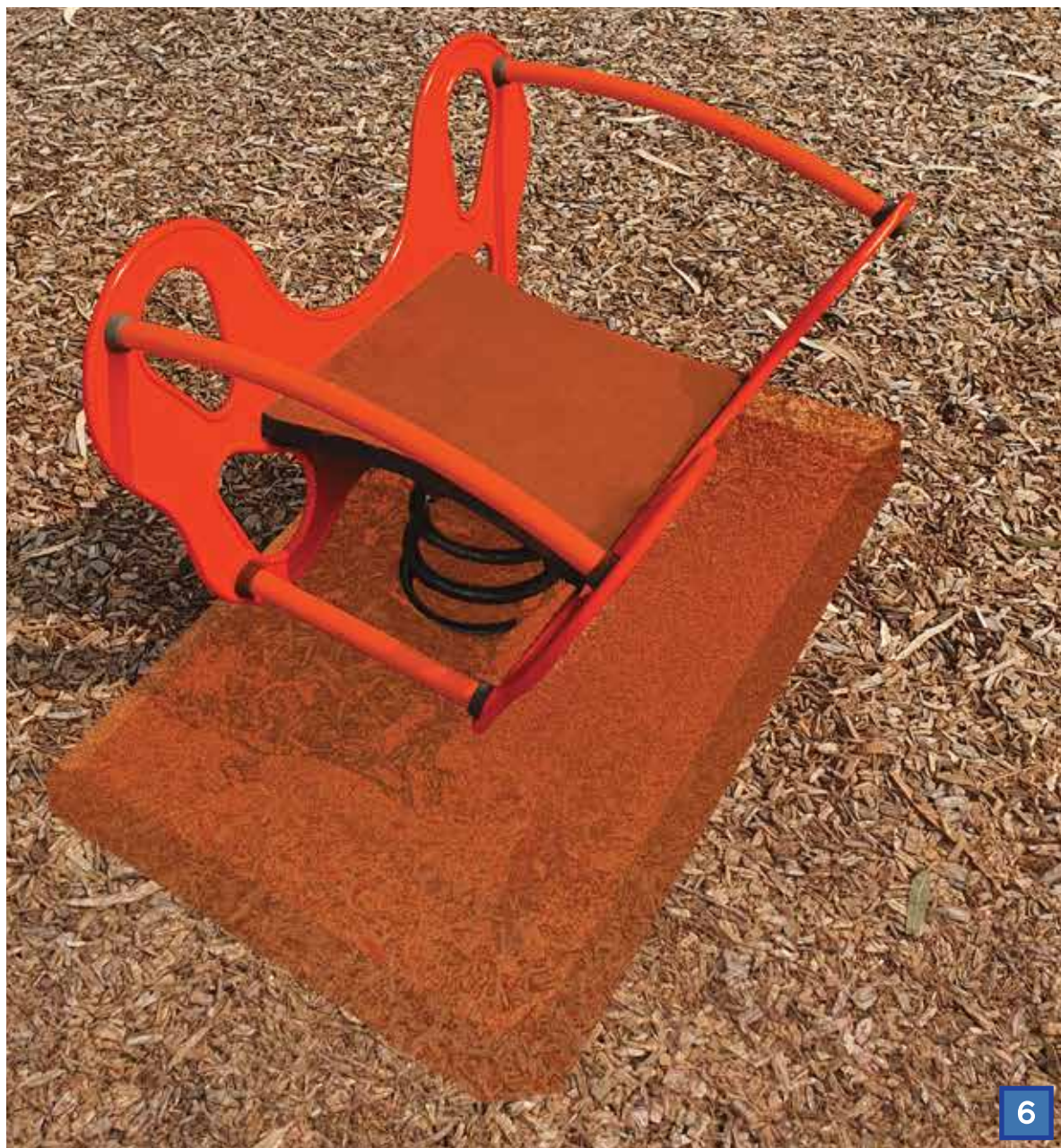
7



19



2



6



5



16



21



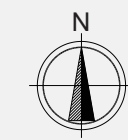
Play equipment / paving

Planting palette

Pennstripe Pennisetum

# Bayside City Playgrounds Old Dairy Reserve - Precedent Images

epcad.com.au



scale : nts @ A1 date : 24 August 2020  
The information contained in this document are the copyright of EPCAD Pty Ltd. Use or copying of the document in whole or part without the written permission of EPCAD Pty Ltd constitute an infringement of copyright.  
EPCAD Pty Ltd ACN 093 476 334 ABN 26 093 476 334  
28-30 Mayfair Street, West Perth, WA 6005, PO Box 1233, West Perth WA  
t +61 8 9481 4410 e epcad@epcad.com.au

