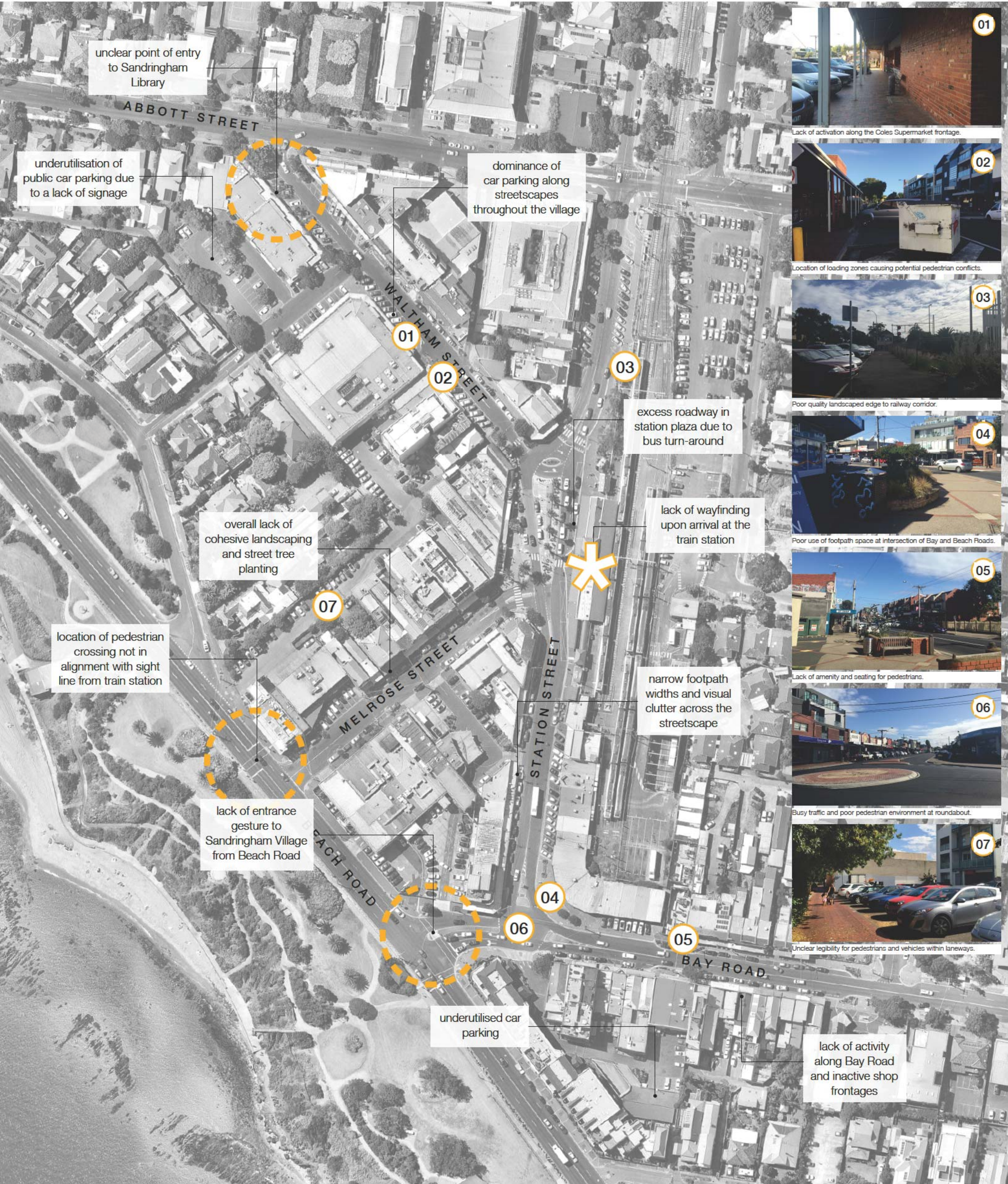


The study area





Existing constraints





## What we've already heard...

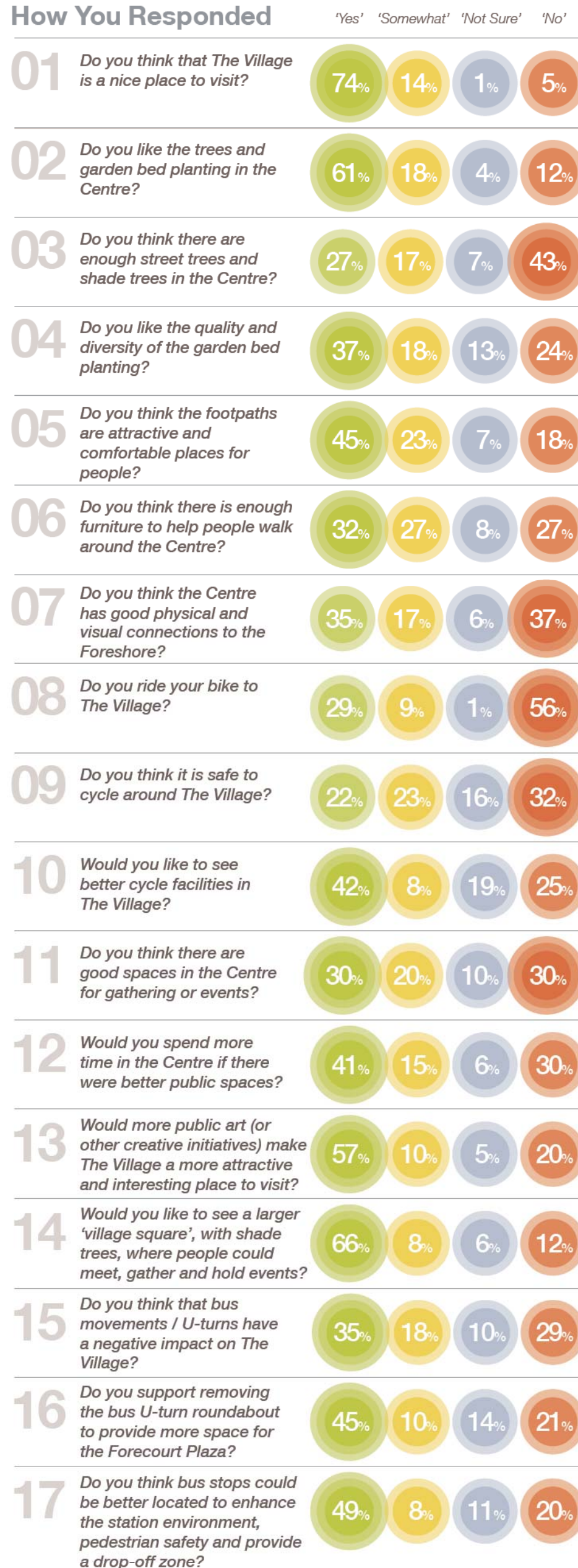
### Street Survey Responses

Outlined here is a summary of the responses we received from you in the first round of consultation and our on-street surveys.

The key outcomes / requirements include:

- **More street tree planting;**
- **More furniture** to assist people in moving around The Village;
- Enhanced **physical and visual connections to the foreshore;**
- Enhanced **cyclist safety and facilities;**
- There was a mixed response regarding existing public space access, but **people would spend more time in The Village if public spaces were better;**
- Respondents would like to see **more public art;**
- An overwhelming number of respondents would like to see Sandringham have **a central 'Village Square';**
- A large portion of respondents thought that **removing the bus U-turns** from the centre of The Village could **enhance the space as a plaza;** and
- Almost half of respondents thought there was value in looking at **relocating the buses** outside of the Station.

### How You Responded



Community Consultation Promotional Flyer



What do you like about Sandringham Village? What can be better?



We need your ideas on how we can make Sandringham Village the best it can be.

Council is preparing a master plan for the public realm of Sandringham Village. The masterplan will guide the future development of the Villages public areas, including footpaths, trees, plantings and furniture. It will also find ways to improve access for all, including walking and cycling.

We have ideas but we need your input to get it right.

We'll be in Sandringham for Sessions in the Street on Thursday 21 May and Saturday 23 May or you can attend a workshop at the Sandringham Senior Citizens Centre in Abbott Street on Wednesday 27 May 2015 from 6.30pm-8pm.

Or you can contribute online at [www.bayside.vic.gov.au/haveyoursay](http://www.bayside.vic.gov.au/haveyoursay)

For further information call 9599 4444.





# What we've already heard...

## The Community Workshop

Council held a Community Issues and Opportunities Workshop to develop ideas and solutions for the future development of Sandringham Village's streetscapes.

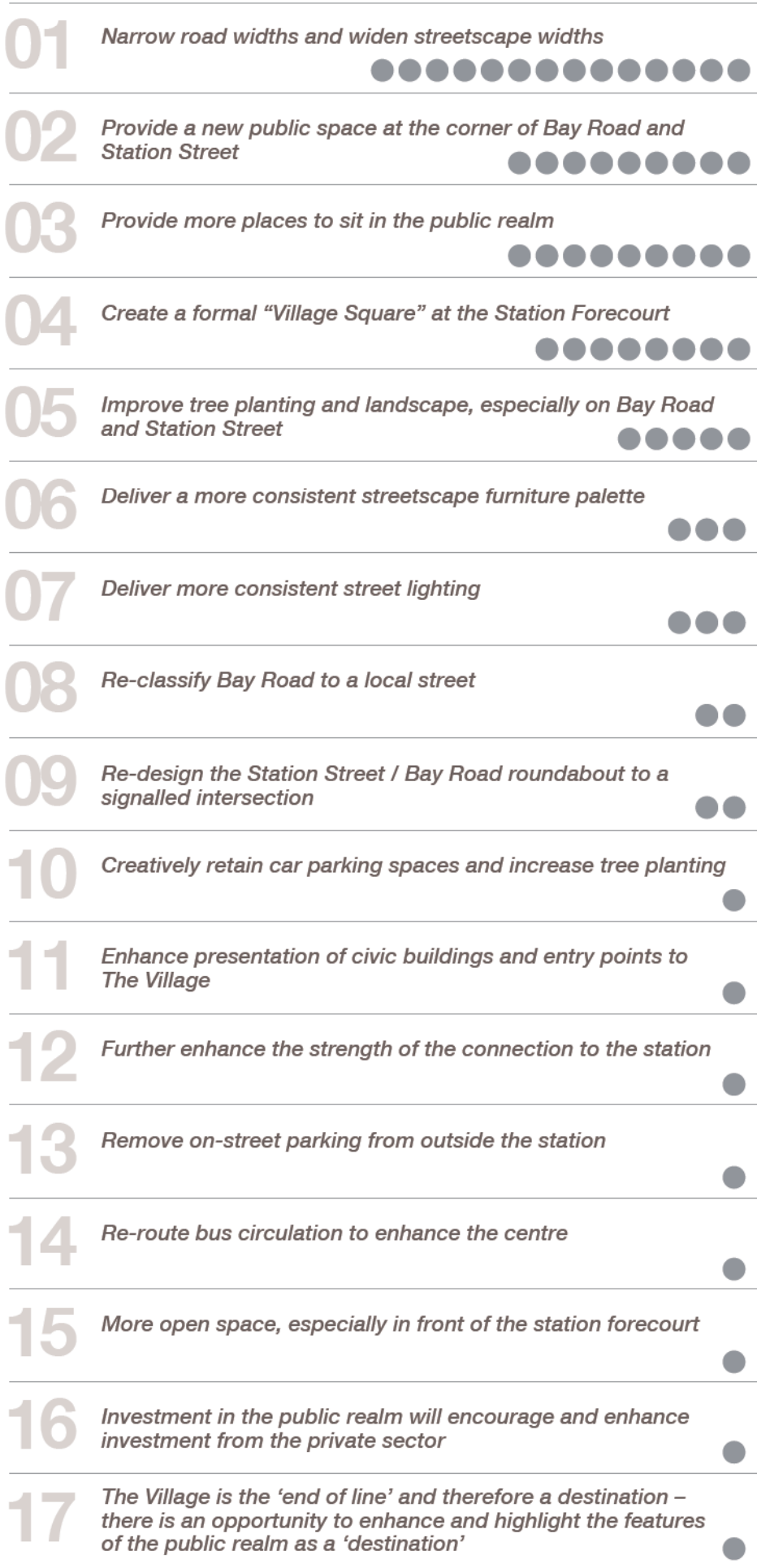
The Community Workshop was structured as an open discussion forum, where participants were guided in the discussion to focus on and think about existing issues within The Village, then opportunities for the future, and finally to order the opportunities into what they see as priorities in achieving change. The outputs from the session have been summarised and listed below in that order.



Photographs from Community On-street Consultation

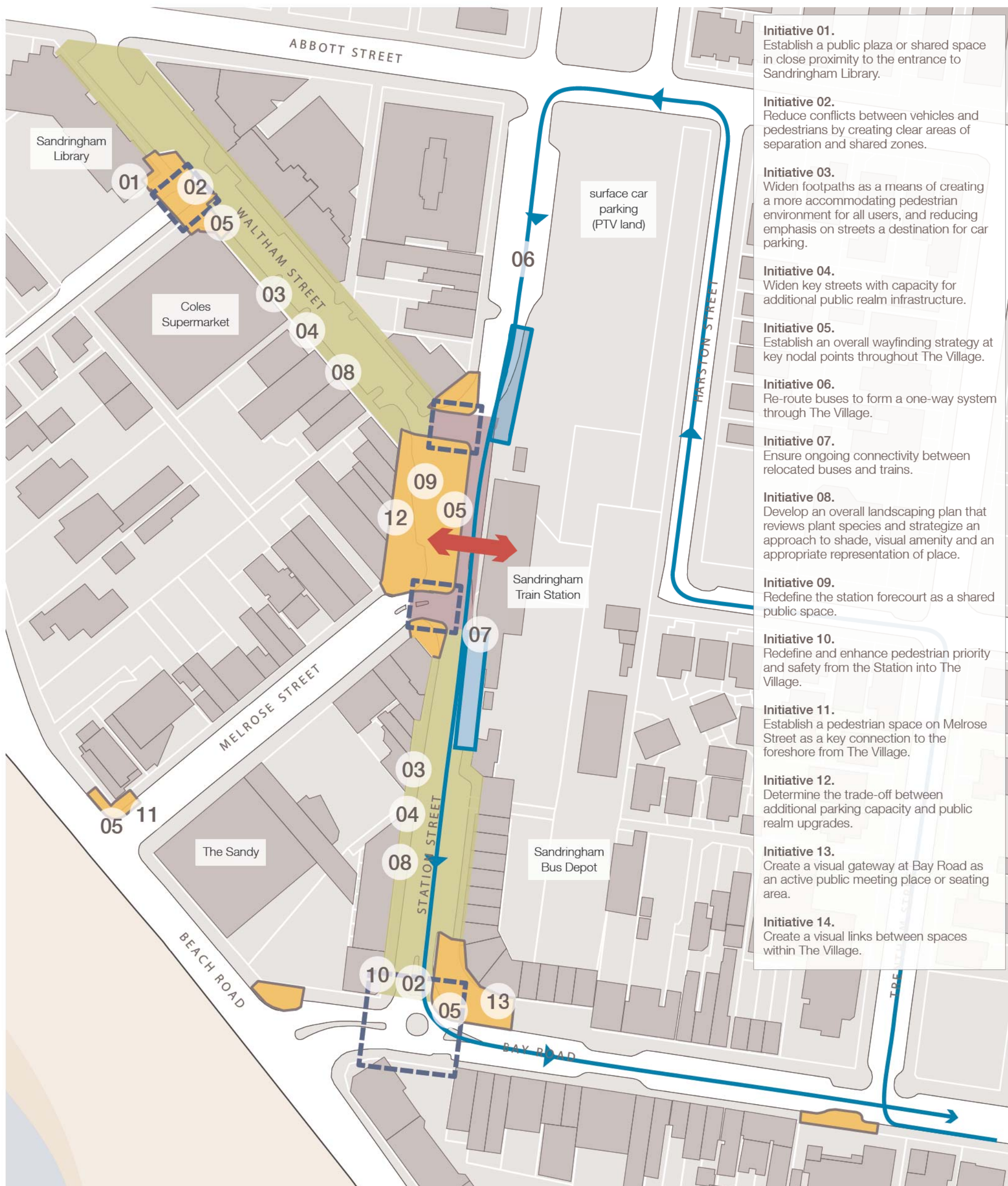
## What are the priorities moving forward?

Each blue dot represents a vote cast by workshop participants for each priority. The priorities were then ordered by the most popular from top to bottom.





## The framework plan

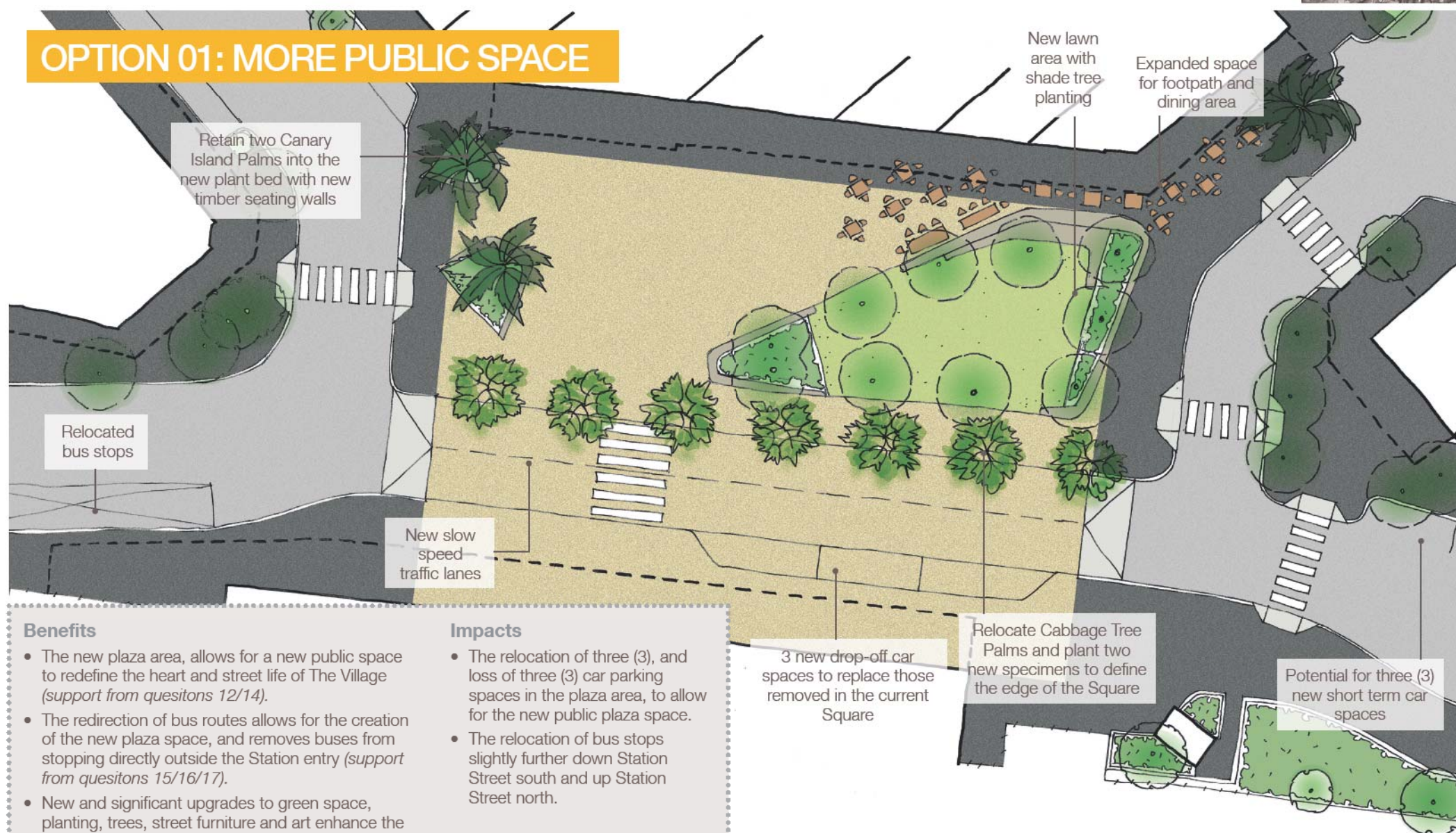




## Area 01: A Village Square for Sandringham Village



### OPTION 01: MORE PUBLIC SPACE



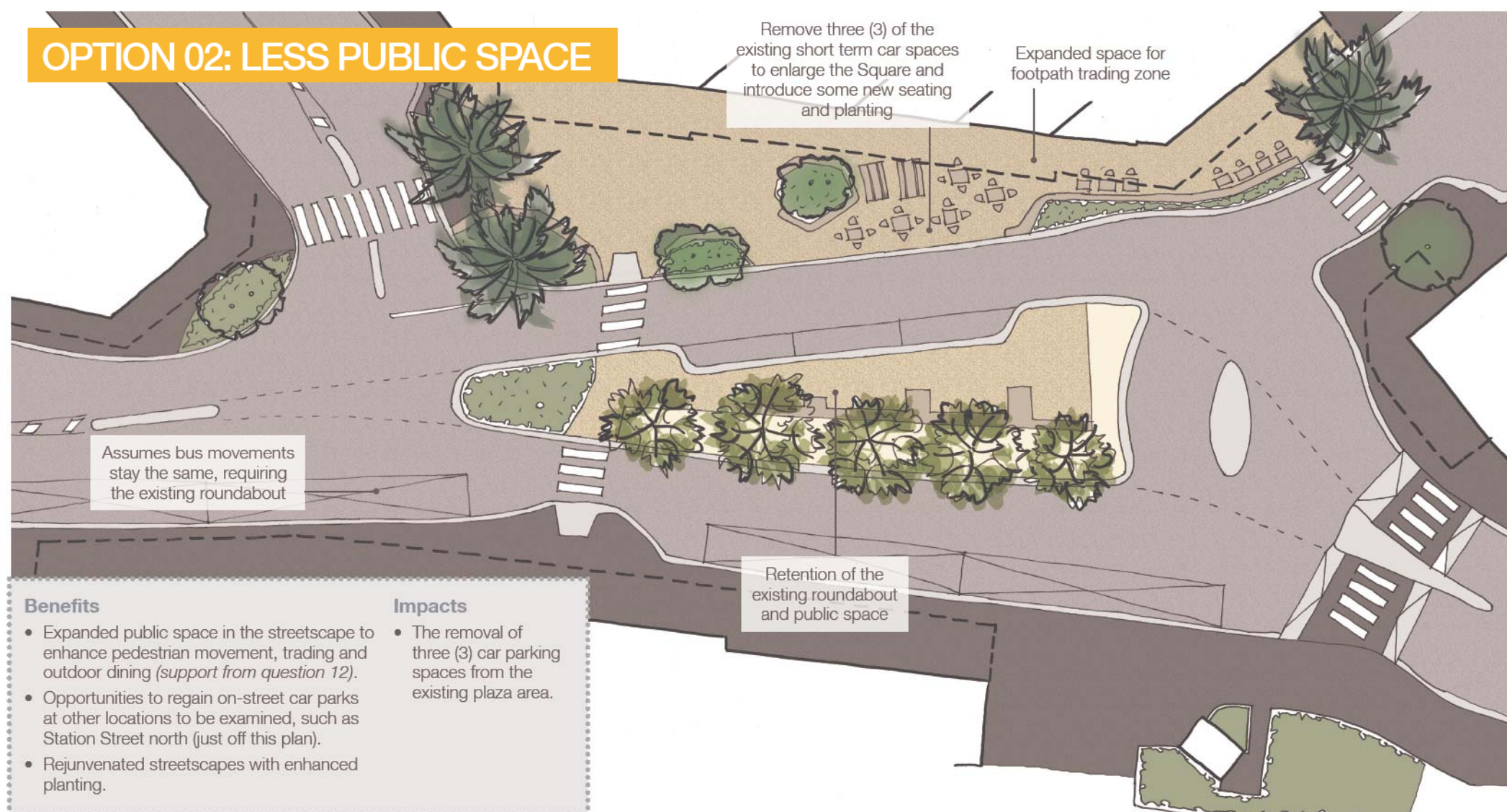
#### Benefits

- The new plaza area, allows for a new public space to redefine the heart and street life of The Village (support from questions 12/14).
- The redirection of bus routes allows for the creation of the new plaza space, and removes buses from stopping directly outside the Station entry (support from questions 15/16/17).
- New and significant upgrades to green space, planting, trees, street furniture and art enhance the amenity of the public realm (support from question 3/12/13).

#### Impacts

- The relocation of three (3), and loss of three (3) car parking spaces in the plaza area, to allow for the new public plaza space.
- The relocation of bus stops slightly further down Station Street south and up Station Street north.

### OPTION 02: LESS PUBLIC SPACE



#### Benefits

- Expanded public space in the streetscape to enhance pedestrian movement, trading and outdoor dining (support from question 12).
- Opportunities to regain on-street car parks at other locations to be examined, such as Station Street north (just off this plan).
- Rejuvenated streetscapes with enhanced planting.

#### Impacts

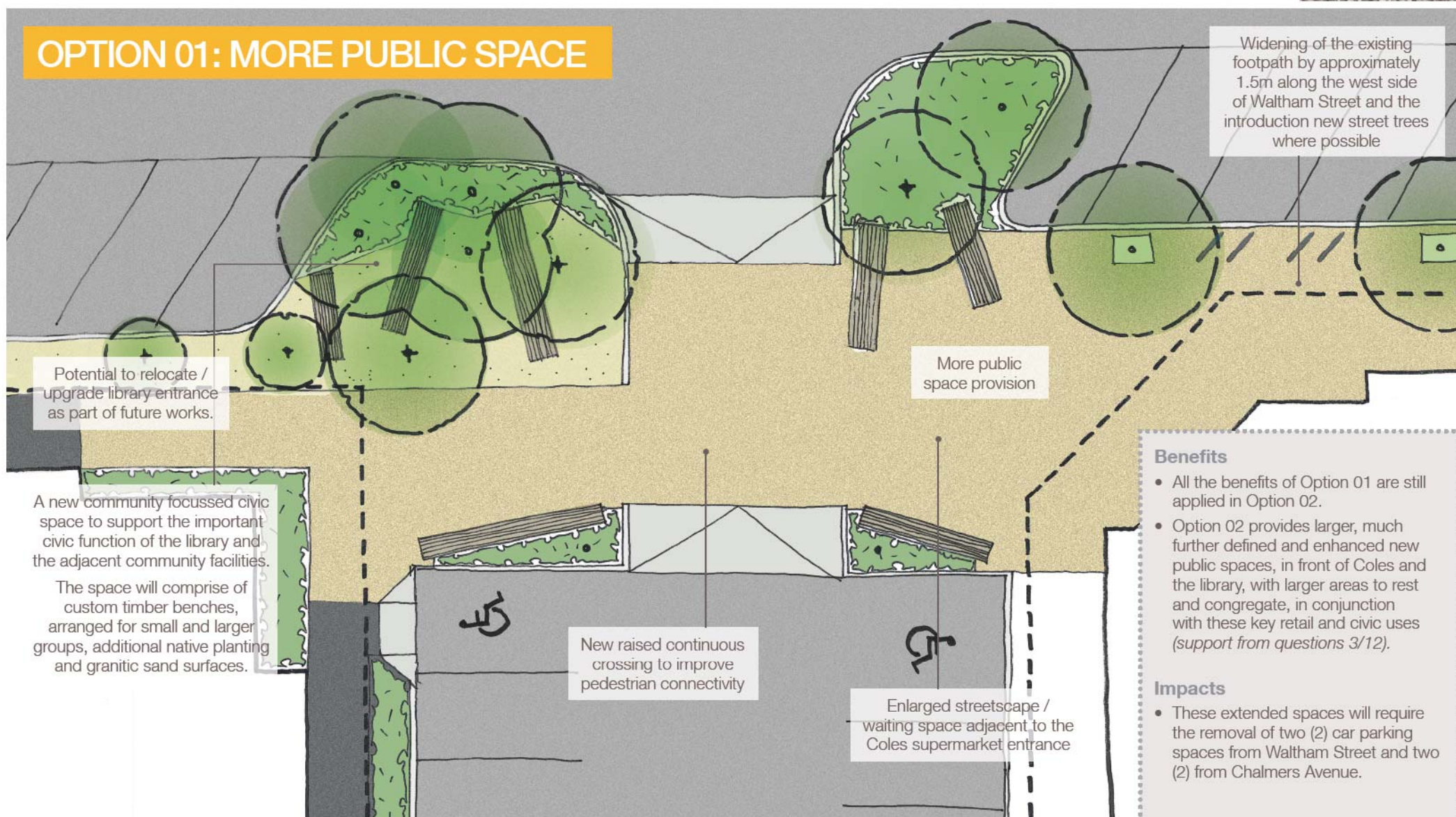
- The removal of three (3) car parking spaces from the existing plaza area.



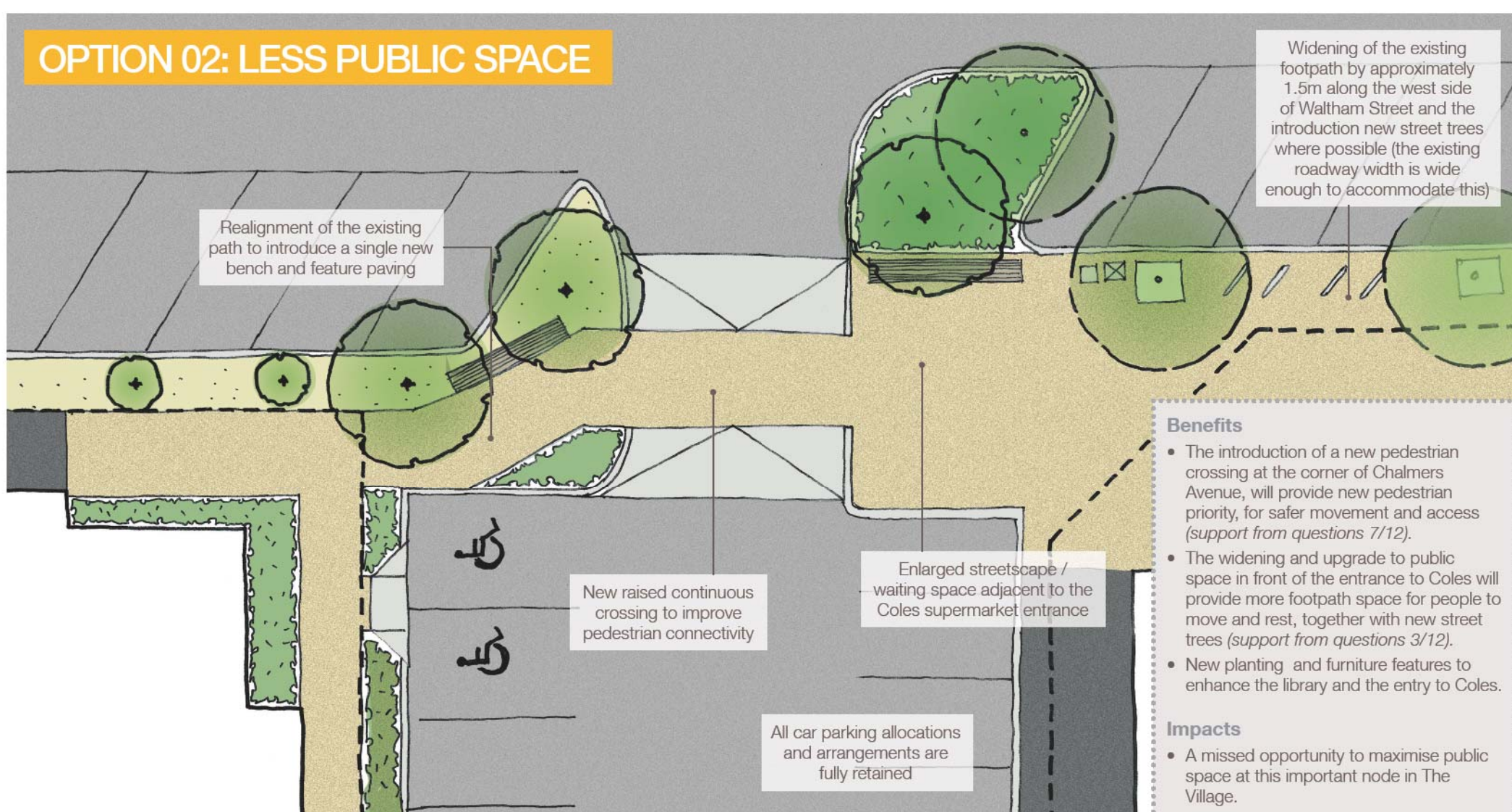
## Area 02: Waltham Street Design Concepts



### OPTION 01: MORE PUBLIC SPACE

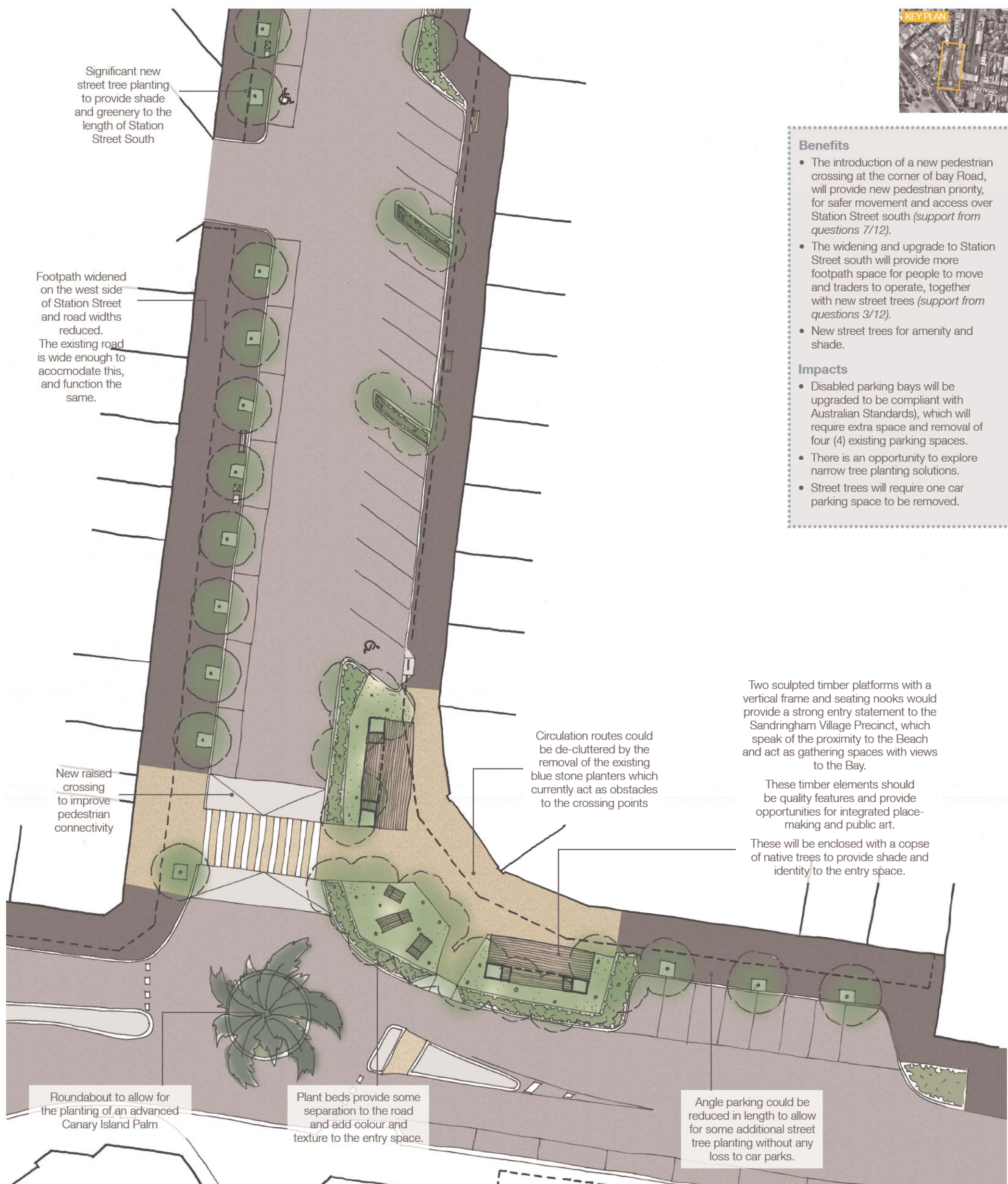


### OPTION 02: LESS PUBLIC SPACE





## Area 03: Station Street south Design Concepts



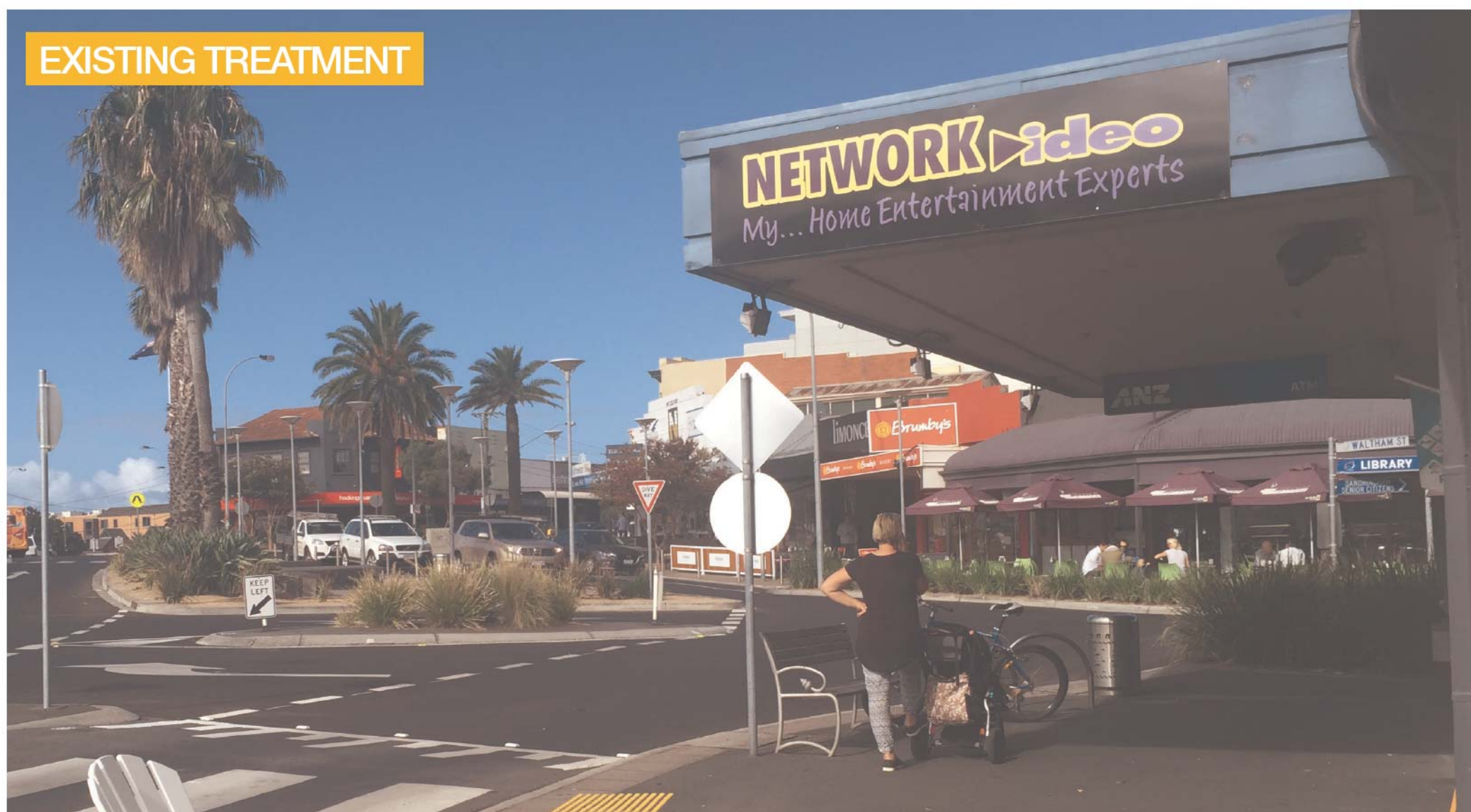


## Area 01: A Village Square for Sandringham Village

### PROPOSED DESIGN



### EXISTING TREATMENT





Area 02: A community space on Waltham Street

PROPOSED DESIGN



EXISTING TREATMENT

