

Design Intent

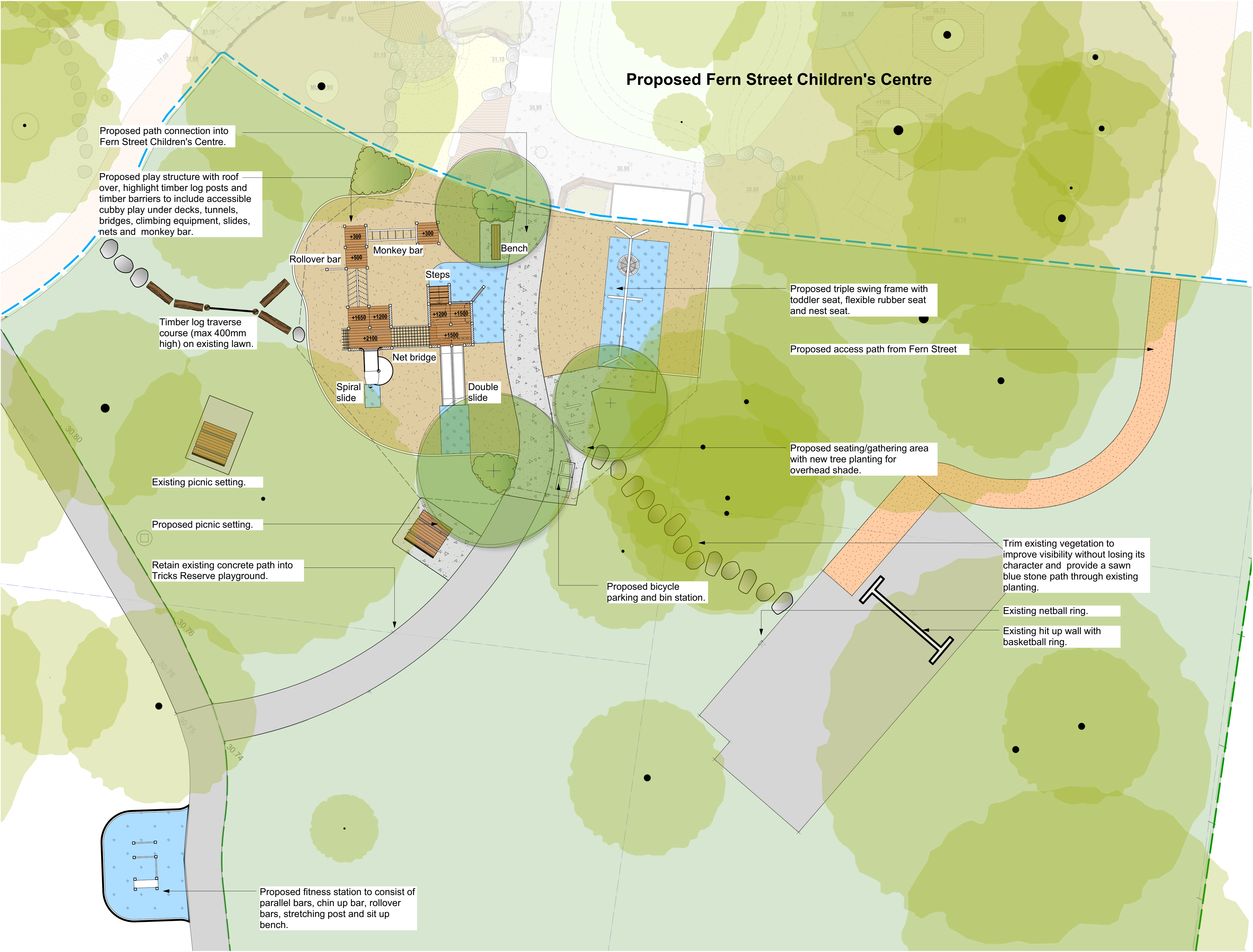
The new Tricks Resrve Playground will provide similar and improved all abilities play experiences offered by the current playground and include new elements such as:

- a nest swing
- challenging traverse course
- naturally shaded seating areas

The new swing and play structure will be located within the existing playground footprint. It is envisioned that existing trees will not be removed.

The new play structure will be predominantly timber with some highlight colours.

- LEGEND**
- EXISTING TREES TO BE RETAINED AND PROTECTED
 - PROPOSED TREES
 - PROPOSED GARDEN BEDS
 - EXISTING LAWN
 - PERMEABLE PAVING SURFACE
 - WETPOUR SYNTHETIC SURFACE (IMPACT ATTENUATING TO AS4422)
 - PLAYGROUND MULCH (IMPACT ATTENUATING TO AS 4422)
 - GARDEN BED MULCH
 - FLAGSTONE PAVERS
 - TIMBER LOG EDGING
 - TIMBER DECKING
 - PICNIC SETTING
 - BENCH
 - SEAT WITH BACK AND ARM REST



Landscape Concept Plan

Tricks Reserve Playground Refurbishment

6 Fern Street, Black Rock VIC



Job No. 2992
Date: 06.04.20 Isu1 RevA
Dwg No: CP01 of 1
Scale: 1:100 @A1

0 1 2 3 4 5m