



DRAWING INDEX

DWG NO.	DWG TITLE
WD01	COVER SHEET
WD02	LAYOUT PLAN
WD03	SETOUT PLAN
WD04	DETAILS

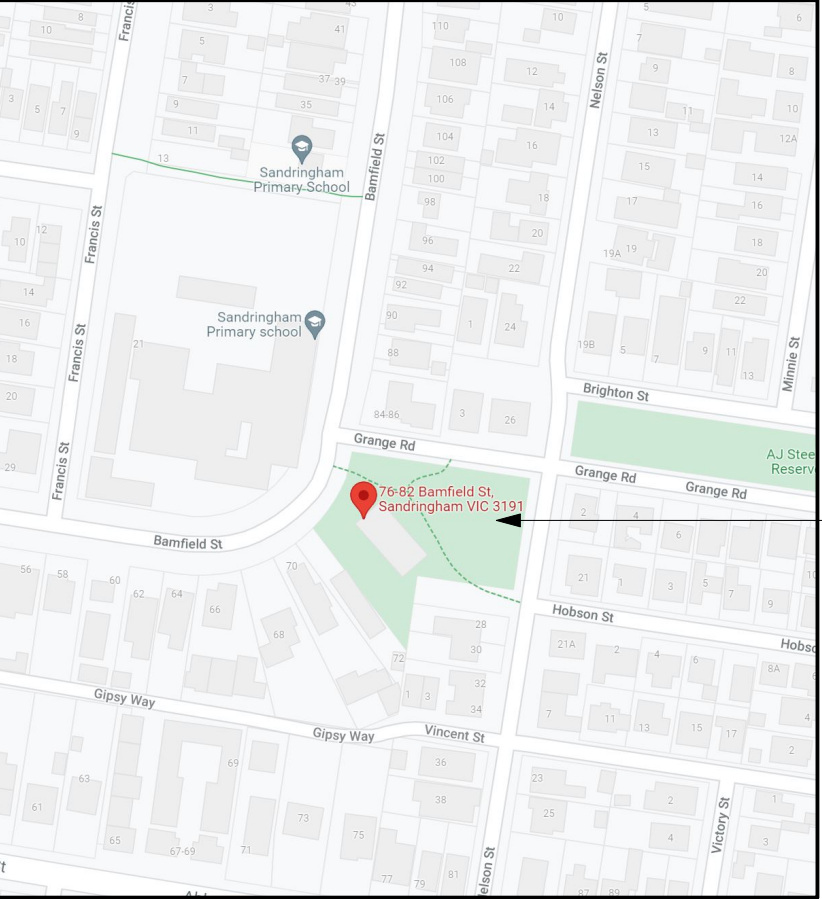
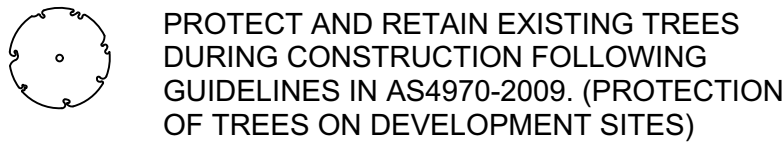
THESE DRAWINGS ARE TO BE READ IN CONJUNCTION WITH THE FOLLOWING:

- JEAVONS LANDSCAPE ARCHITECT'S SPECIFICATION
- SURVEY - BAYSIDE - BAYSIDE - BAMFIELD STREET RESERVE - 2D
- ADVISE OF ANY DISCREPANCIES BEFORE CONSTRUCTION

LEGEND



SOFT LANDSCAPING



LOCATION PLAN

SITE LOCATION

Revision	Date	Description
1	14/10/21	FOR TENDER
Issue	Date	Description

CLIENT:



LANDSCAPE ARCHITECT:



LANDSCAPE WORKING DRAWINGS

Bamfield Reserve

Playground Improvements

Bunurong Country  
76-82 Bamfield Street, Sandringham

COVER SHEET

	Scale Scale Bar 0 1 2 3 4 5m	1:100 @A1
DRAWING NUMBER WD01	OF 4	TOTAL SHEETS
Drawn By AB	Checked GM/MJ	Project Number 193103

Note: This drawing is to be read in conjunction with the other contract documents included in the project specification, and any other instructions issued during the course of the contract. Contractors must verify all dimensions on site before commencing any work.  
COPYRIGHT© JEAVONS LANDSCAPE ARCHITECTS

DO NOT SCALE DRAWING





GENERAL NOTES:

1. THE CONTRACTOR IS DEEMED TO BE RESPONSIBLE FOR THE CORRECT INSTALLATION OF ALL WORK INCLUDING PLAY/PLAYGROUND EQUIPMENT FOR THIS PROJECT.
2. ALL WORKS AND PLAYGROUND EQUIPMENT INSTALLATION TO COMPLY WITH AS4685 PARTS 1-6 & 11: 2017 AND AS4685 PARTS 0 AND 1.
3. ALL IMPACT ATTENUATING SURFACES TO COMPLY WITH AS/NZ 4422:2016.
4. THE CONTRACTOR MUST ENSURE THE SITE IS SECURELY FENCED OFF WITH CHAIN MESH FENCE THROUGHOUT THE CONSTRUCTION PERIOD.
5. PROPOSED LEVELS HAVE BEEN ESTABLISHED FROM THE FEATURE SURVEY. ALL PROPOSED LEVELS SHOWN ARE TO FINISHED SURFACE LEVELS UNLESS OTHERWISE NOTED.
6. ROOTS OF EXISTING TREES MUST NOT BE DISTURBED. REFER TO WORK NEAR EXISTING TREES NOTES.
7. ENSURE THAT THE TOP SURFACE OF ALL CONCRETE FOOTINGS AND FLANGES FOR POSTS ARE MIN. 200mm BELOW BASE LEVEL OF MULCH.
8. ENSURE NO TRIP HAZARDS BETWEEN ALL NEW AND EXISTING SURFACES.
9. ALL SURFACES TO BE GRADED TO ACHIEVE POSITIVE DRAINAGE TO NEAREST STORMWATER SYSTEM.

LEGEND

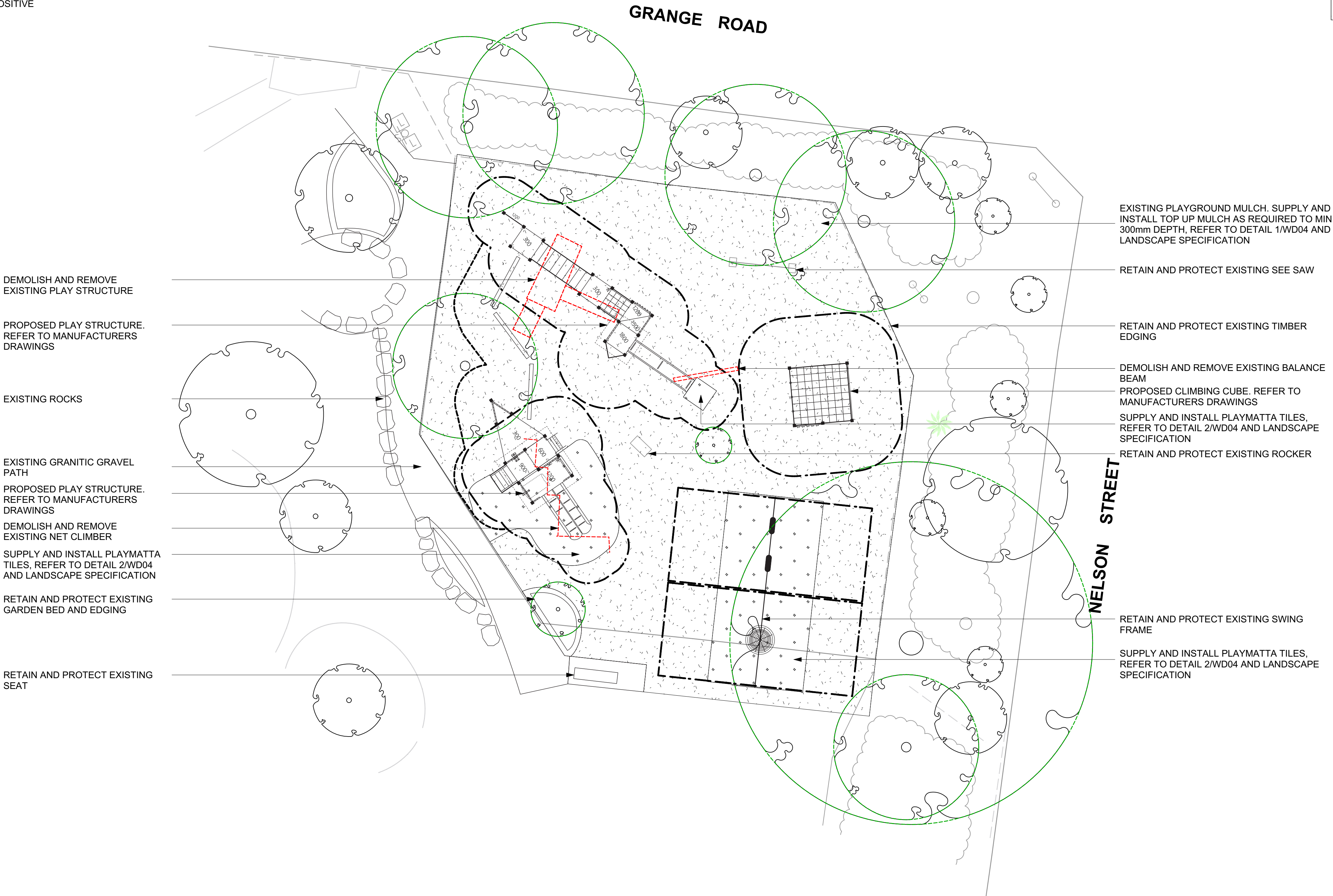
- FALLZONE IMPACT AREA: SURFACES TO COMPLY WITH AS4685
- SHOWS EXTENT OF DEMOLITION WORKS. ALL ITEMS OUTSIDE THESE AREAS ARE TO BE PROTECTED AND RETAINED

SOFT LANDSCAPING

- PROTECT AND RETAIN EXISTING TREES DURING CONSTRUCTION FOLLOWING GUIDELINES IN AS4970-2009. (PROTECTION OF TREES ON DEVELOPMENT SITES)
- TEMPORARY TREE PROTECTION ZONE (TPZ) FENCE AROUND EXISTING TREES DURING CONSTRUCTION

SURFACES

- PLAYMATTAS TILES (IMPACT ATTENUATING TO AS4422)
- EXISTING PLAYGROUND MULCH TO BE TOPPED UP AS REQUIRED (IMPACT ATTENUATING TO AS 4422)



Revision	Date	Description
----------	------	-------------

1	14/10/21	FOR TENDER
Issue	Date	Description

CLIENT:



LANDSCAPE ARCHITECT:



LANDSCAPE WORKING DRAWINGS

Bamfield Reserve

Playground Improvements

Bunurong Country  
76–82 Bamfield Street, Sandringham

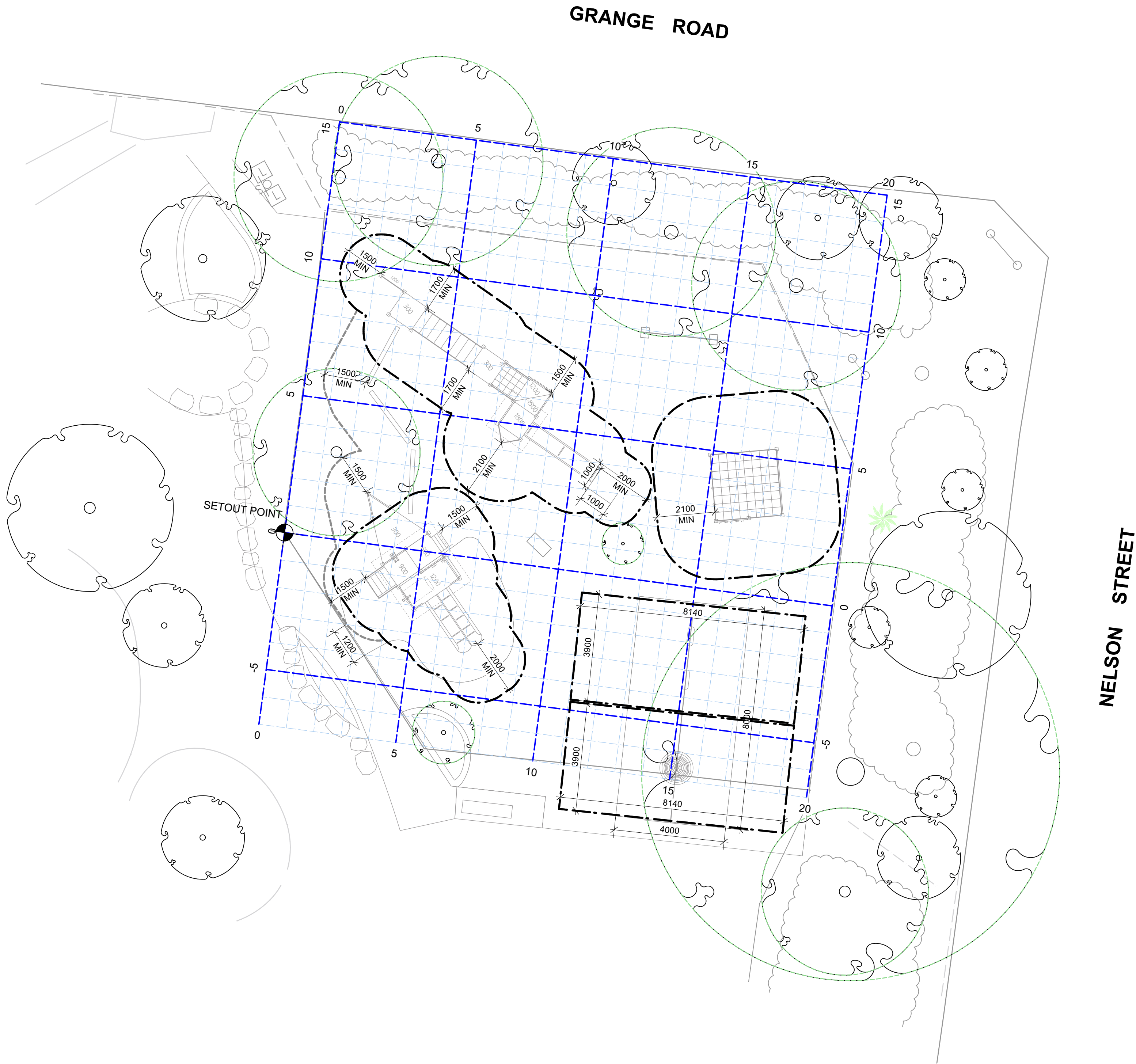
LAYOUT PLAN

	Scale Scale Bar 0 1 2 3 4 5m	1:100 @A1
DRAWING NUMBER WD02	OF 4	TOTAL SHEETS
Drawn By AB	Checked GM/MJ	Project Number 193103
Note: This drawing is to be read in conjunction with the other contract documents included in the project specification, and any other instructions issued during the course of the contract. Contractors must verify all dimensions on site before commencing any work. COPYRIGHT© JEAUVONS LANDSCAPE ARCHITECTS		
DO NOT SCALE DRAWING		



- SETOUT NOTES:**
- IT IS THE CONTRACTOR'S RESPONSIBILITY TO CONFIRM THE EQUIPMENT FALLZONES AND INSTALLATION DIMENSIONS FOR ALL PROPRIETARY PLAY/PLAYGROUND ITEMS WITH THE MANUFACTURER OR SUPPLIER BEFORE THE SETOUT STAGE.
1. MAIN SETOUT POINT ESTABLISHED FROM SETOUT POINT SHOWN
  2. SETOUT GRID BASED ON 5 METRE INTERVALS
  3. INTERMEDIATE OFFSETS ESTABLISHED @ 1 METRE INTERVALS
  4. ALL OFFSET MEASUREMENTS ARE IN MILLIMETRES (UNLESS OTHERWISE NOTED), AND ARE ROUNDED TO THE NEAREST 5mm
  5. ENSURE ALL PAVING SURFACES FINISH FLUSH WITH ADJACENT SURFACES
  6. ALL SURFACES MUST DRAIN TO OR BE CONNECTED TO PITS DESIGNED BY LANDSCAPE CONTRACTOR
  7. REFER TO DETAILS FOR INDIVIDUAL SETOUT DIMENSIONS OF DECKS AND OTHER ELEMENTS

IMPACT AREAS / FALLZONES	
Minimum requirements of AS 4685-2014 as below:	
FIXED EQUIPMENT - FREE HEIGHT OF FALL	
FALL HEIGHT (mm)	FALL ZONE (mm)
No Forced Movement <600mm	- * Recommend 1500mm unless approved by Council's Representative
Forced Movement <600mm	1500mm
600mm ≥ H ≤ 1500mm	1500mm
1600mm	1567mm
1700mm	1633mm
1800mm -* Maximum specification for SECS	1700mm -* Maximum specification for SECS
1900mm	1767mm
2000mm	1833mm
2100mm	1900mm
2200mm	1967mm
2300mm	2033mm
2400mm	2100mm
2500mm	2167mm
2600mm	2233mm
2700mm	2300mm
2800mm	2367mm
2900mm	2433mm
3000mm	2500mm



**LEGEND**

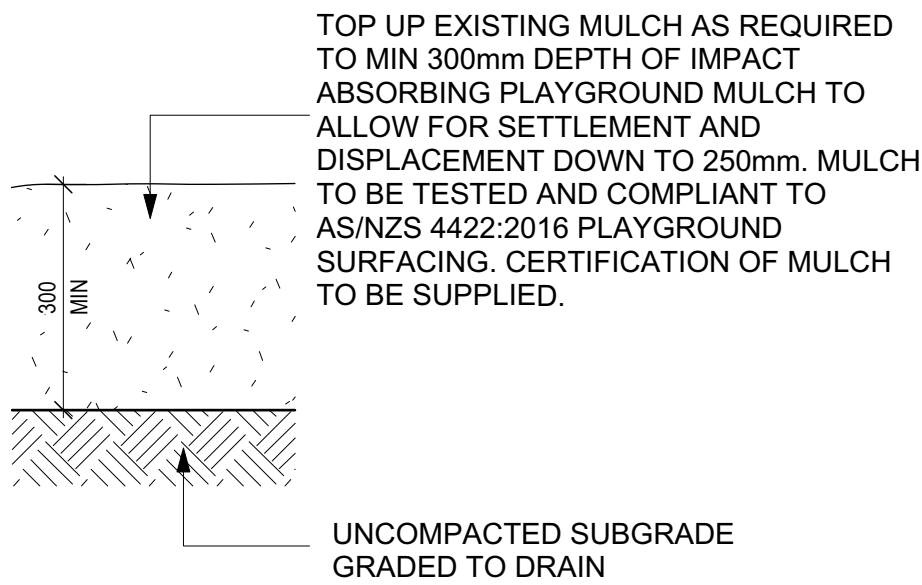
FALLZONE IMPACT AREA: SURFACES TO COMPLY WITH AS4685

**SOFT LANDSCAPING**

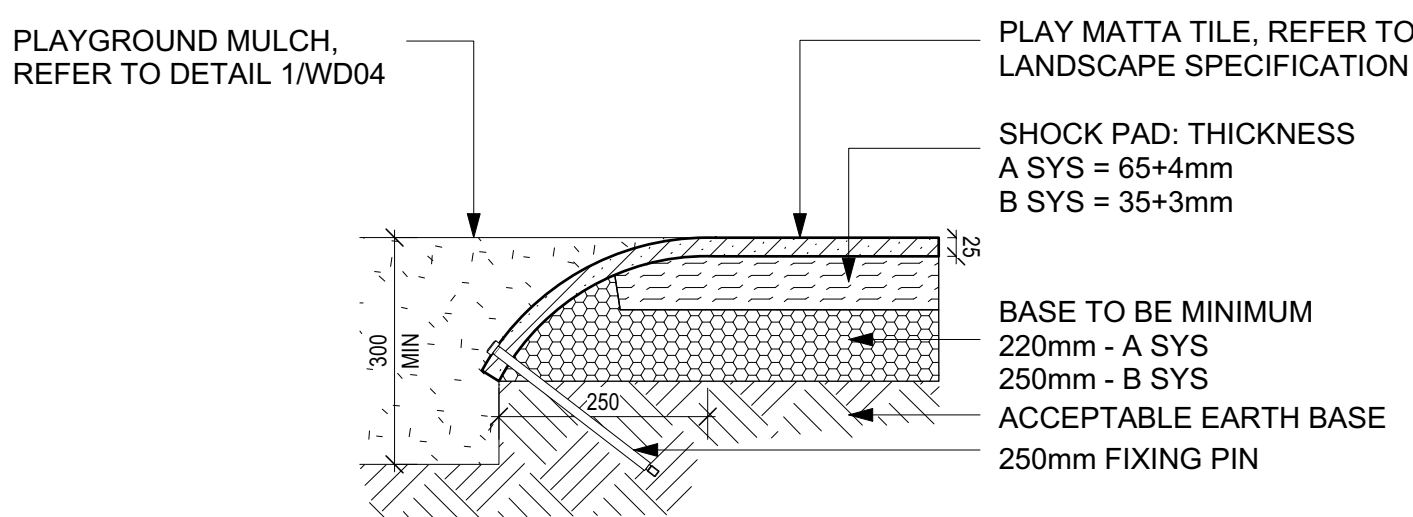
PROTECT AND RETAIN EXISTING TREES DURING CONSTRUCTION FOLLOWING GUIDELINES IN AS4970-2009. (PROTECTION OF TREES ON DEVELOPMENT SITES)

Revision	Date	Description
1	14/10/21	FOR TENDER
Issue	Date	Description
CLIENT:		
LANDSCAPE ARCHITECT:		
<b>LANDSCAPE WORKING DRAWINGS</b>		
<b>Bamfield Reserve</b>		
Playground Improvements		
Bunurong Country 76–82 Bamfield Street, Sandringham		
<b>SETOUT PLAN</b>		
Scale 1:100 @A1		
Scale Bar 0 1 2 3 4 5m		
DRAWING NUMBER WD03		TOTAL SHEETS 4
Drawn By AB	Checked GM/MJ	Project Number 193103
Note: This drawing is to be read in conjunction with the other contract documents included in the project specification, and any other instructions issued during the course of the contract. Contractors must verify all dimensions on site before commencing any work. COPYRIGHT© JEAUVONS LANDSCAPE ARCHITECTS		
DO NOT SCALE DRAWING		

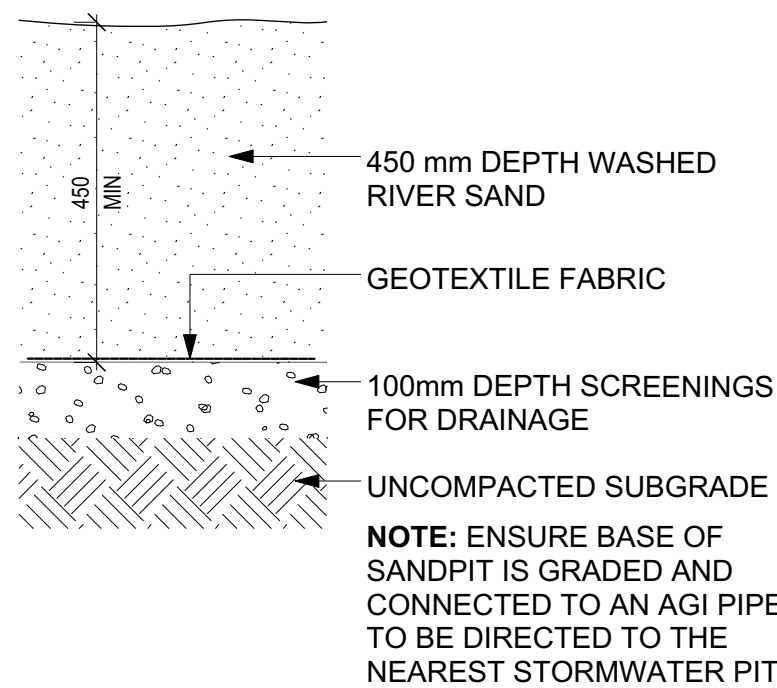




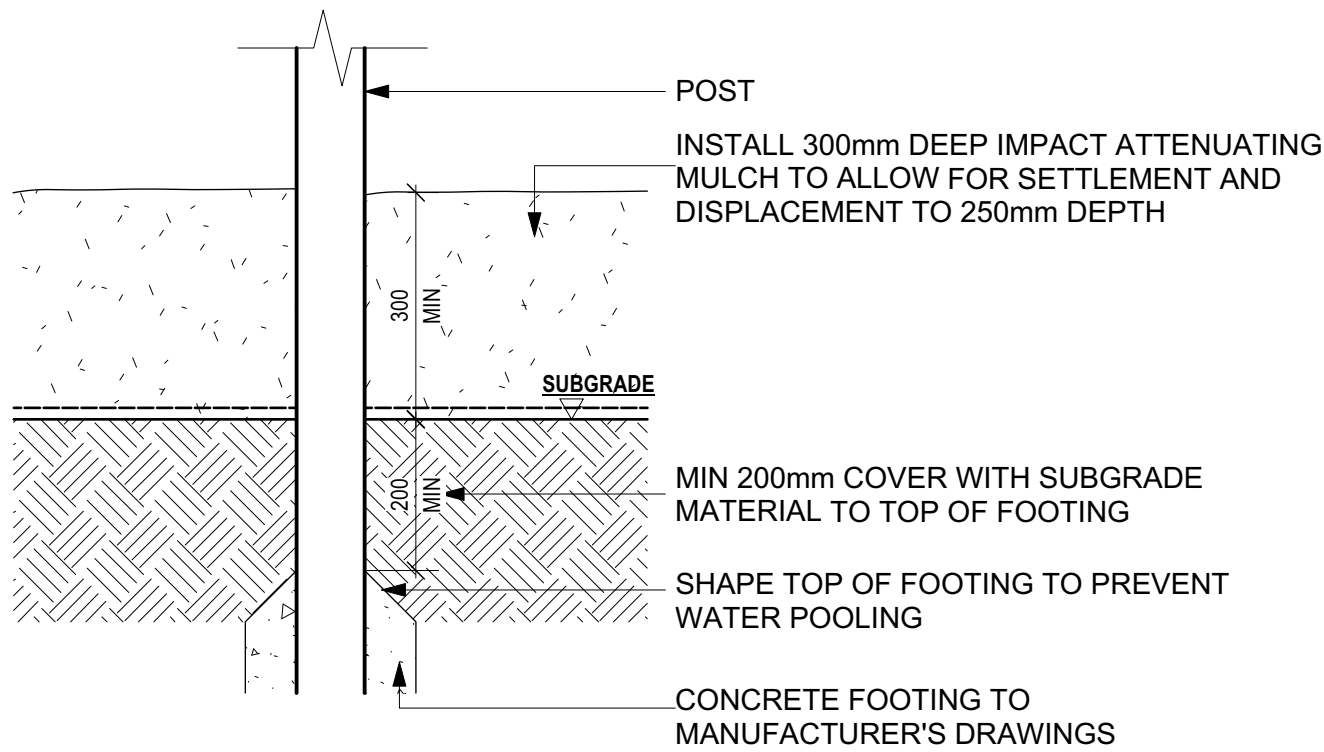
**1**  
WD04 **TYPICAL PLAYGROUND MULCH INSTALLATION**  
Scale: 1:10



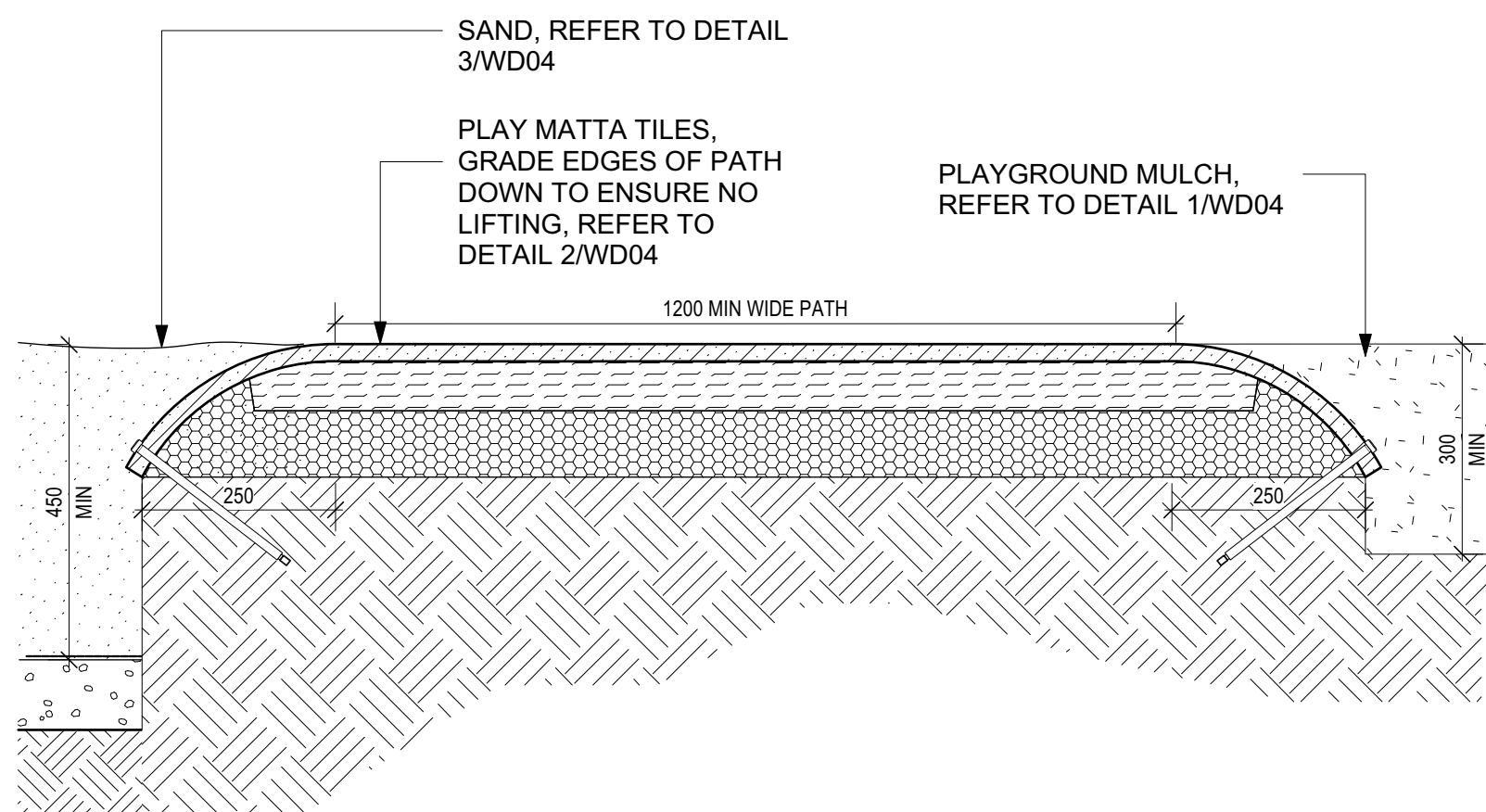
**2**  
WD04 **D4237 EDGE DETAIL TRANSITION SYSTEM ON COMPACTED BASE: PLAY MATTA**  
Scale: 1:10



**3**  
WD04 **TYPICAL SAND INSTALLATION**  
Scale: 1:10



**4**  
WD04 **TYPICAL FOOTING INSTALLATION IN PLAYGROUND MULCH**  
Scale: 1:10



**5**  
WD04 **SAND-PLAY MATTA PATH-PLAYGROUND MULCH**  
Scale: 1:10

#### GENERAL:

1. THE CONTRACTOR IS DEEMED TO BE RESPONSIBLE FOR THE CORRECT INSTALLATION OF ALL WORK.
2. THE CONTRACTOR MUST ENSURE THE SITE IS SECURELY FENCED OFF WITH CHAIN MESH FENCE THROUGHOUT THE CONSTRUCTION PERIOD.
3. ROOTS OF EXISTING TREES MUST NOT BE DISTURBED, REFER TO WORK NEAR EXISTING TREES NOTES.
4. REFER TO MANUFACTURER'S DRAWINGS FOR INSTALLATION OF ALL PLAY EQUIPMENT.
5. ENSURE NO TRIP HAZARDS BETWEEN ALL NEW AND EXISTING SURFACES.
6. ALL SURFACES TO BE GRADED TO ACHIEVE POSITIVE DRAINAGE TO NEAREST STORMWATER SYSTEM.

Revision	Date	Description
1	14/10/21	FOR TENDER
Issue	Date	Description
CLIENT:		



LANDSCAPE ARCHITECT:



#### LANDSCAPE WORKING DRAWINGS

**All Sites - Allambee, Bamfield, Basterfield, Robert Grieve**

Playground Improvements

Bunurong Country

#### DETAILS

Scale Scale Bar		AS SHOWN @A1
DRAWING NUMBER	OF	TOTAL SHEETS
WD04		4
Drawn By	Checked	Project Number
GM	GM/MJ	193103

Note: This drawing is to be read in conjunction with the other contract documents included in the project specification, and any other instructions issued during the course of the contract. Contractors must verify all dimensions on site before commencing any work.  
COPYRIGHT© JEAUVONS LANDSCAPE ARCHITECTS

DO NOT SCALE DRAWING